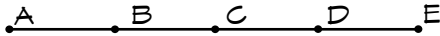
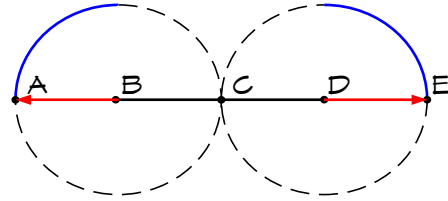


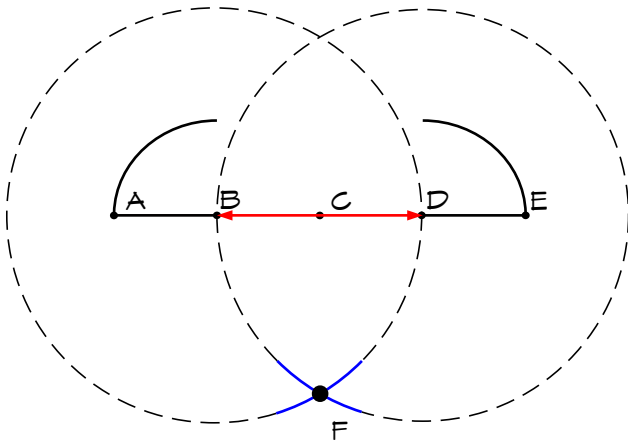
DRAWING A CLASSIC 3-CENTERED ARCH



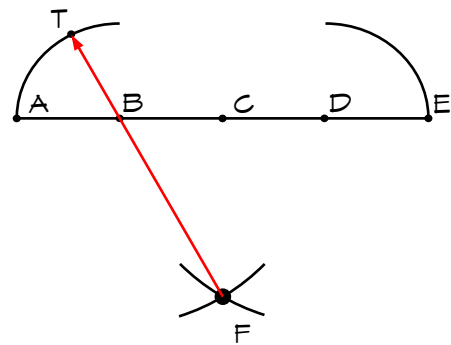
Step 1: Divide the spring line into 4 equal segments.



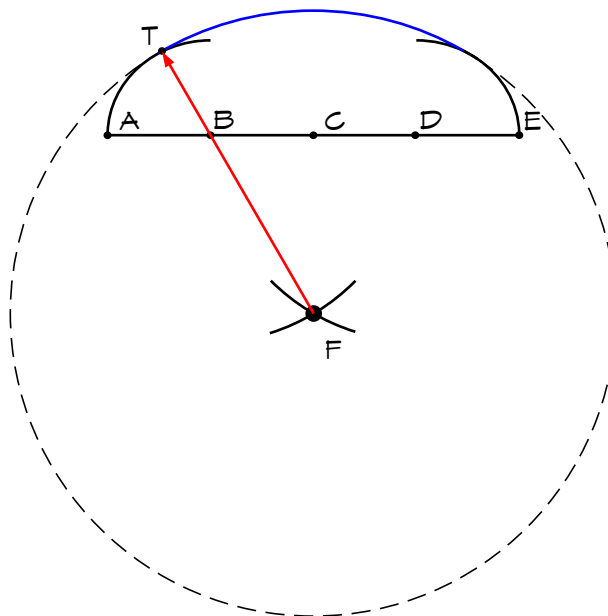
Step 2: Using points B and D as centers, draw quarter arcs with a radius of AB and DE.



Step 3: Using points B and D as centers, and a radius of BD. Draw small arcs below the spring line to locate point F.



Step 4: Using a straight edge, draw a line from point F through point B until it reaches the first arc drawn, point T.



Step 5: Using point F as a center, draw an arc with a radius of FT to close off the top of the arch.